



Smart Machine Smart Decision



Module Roadmap

Version: Jan, 2010

Available Now

H1 2010

**EDEG
Module**



SIM700D
SMT
Quad-Band 2G/EDGE
UL/DL: 236.8kbps
Size: 43.5*26*2.9mm



SIM700
80 Pins B2B
Quad-Band 2G/EDGE
UL/DL: 236.8kbps
Size: 44.6*33.9*2.95mm

**GSM/GPRS+SRD
Module**



SIM802
SMT
Quad-Band 2G
GSM+SRD
Embedded SIM card
Size: 33*33*5.2mm
[Sample time: end of Jan](#)

**GSM/GPRS+ GPS
Module**



SIM508/548
80 Pins B2B
Tri/Quad-Band 2G
Receive 20 Channels
Size: 55*34*3mm



SIM548C
60 Pins DIP
Quad-Band 2G
Receive 20 Channels
Size: 55*33*8.2mm

**GSM/GPRS
Module**



SIM300/340
60 Pins B2B
Tri/ Quad-Band 2G
Embedded TCP/IP
Size: 40*33*2.85mm



SIM305/345
60 Pins B2B
Dual/ Quad-Band
Embedded TCP/IP
Size: 58.4*32.2*3.9mm



SIM300C/340C
60 Pins Dip
Tri/ Quad-Band 2G
Embedded TCP/IP
Size: 50*33*6.2mm



SIM300D/340D
SMT
Tri/ Quad-Band 2G
Embedded TCP/IP
Size: 33*33*3mm



SIM340E
60 Pins B2B
Tri/ Quad-Band 2G
Integrated with SIM Holder
Size: 40*33*5.5mm



SIM900
SMT
Quad-Band 2G
Embedded TCP/IP
Size: 24*24*3mm
[Sample time: mid of Jan](#)



SIM900D
SMT
Quad-Band 2G
Embedded TCP/IP
Size: 33*33*3mm
[Sample time: end of Jan](#)

**Short Range
Module**



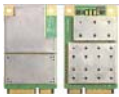
SIM20
SMT
1500M transmission distance
SIM20-A: 433MHz-434.79MHz
SIM20-B: 863MHz-870MHz
SIM20-C: 902MHz-928MHz
Size: 21*13.8*2.6mm

Available Now

H1 2010



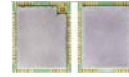
SIM5218A/5218E/5218C
 70 Pins B2B
 Quad-Band 2G
 SIM5218A: Tri-band WCDMA 850/1900/2100MHz
 SIM5218E: Tri-band WCDMA 900/1900/2100MHz
 SIM5218C: Single-band WCDMA 2100MHz
 DL/UL: 7.2Mbps/5.76Mbps
 GPS/A-GPS(SIM5218E/5218A)
 Size: 58*26*4.5mm



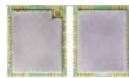
SIM5220
 PCI Express Mini-Card
 Quad-Band 2G
 Dual-Band 3G
 DL/UL: 7.2Mbps/5.76Mbps
 GPS/A-GPS



SIM5215A/SIM5215E/SIM5215J
 70 Pins B2B
 Tri-Band 2G
 SIM5215E: Dual-Band 900/2100MHz
Sample time: end of Jan
 SIM5215A: Dual-Band 850/1900MHz
Sample time: end of Feb
 SIM5215J: Dual-Band 850/2100MHz
Sample time: end of March
 DL/UL: 384Kbps/384Kbps
 Size: 36*26*4.7mm



SIM5213A/5213E/5213J
 SMT
 Tri-Band 2G
 SIM5213E: Dual-Band 900/2100MHz
Sample time: end of Jan
 SIM5213J: Dual-Band 850/2100MHz
Sample time: end of Jan
 SIM5213A: Dual-Band 850/1900MHz
Sample time: end of Feb
 DL/UL: 3.6Mbps/384Kbps
 Size: 38.2*32.2*5mm



SIM5214A/SIM5214E/SIM5214J
 SMT
 Tri-Band 2G
 SIM5214E: Dual-Band 900/2100MHz
Sample time: end of Jan
 SIM5214J: Dual-Band 850/2100MHz
Sample time: end of Jan
 SIM5214A: Dual-Band 850/1900MHz
Sample time: end of Feb
 DL/UL: 384Kbps/384Kbps
 Size: 38.2*32.2*5mm



SIM5216A/SIM5216E/SIM5216J
 70 Pins B2B
 Tri-Band 2G
 SIM5216E: Dual-Band 900/2100MHz
Sample time: end of Feb
 SIM5216A: Dual-Band 850/1900MHz
Sample time: end of March
 SIM5216J: Dual-Band 850/2100MHz
Sample time: end of April
 DL/UL: 3.6Mbps/384Kbps
 Size: 36*26*4.7mm



SIM5340
 SMT
 WCDMA Only
 Dual band 3G
 DL/UL: 384kbps/384Kbps
 Compatible with SIM340D
Sample time: Pending

WCDMA/HSPA Module

*A: Asia
 E: Europe
 J: Japan

Available Now

Q1 2009

Q2 2010



SIM4100
 80 Pins B2B
 TD-SCDMA
 Dual-Band 2G
 DL/ UL: 384kbps/128kbps
 Size: 61*34*3mm



SIM4222S
 PCI Express Mini-Card
 Dual-Band GSM/GPRS/EDGE
 TD-SCDMA
 DL/UL: 2.8Mbps/384Kbps
Sample time: end of Jan



SIM4222
 PCI Express Mini-Card
 Dual-Band GSM/GPRS/EDGE
 TD-SCDMA
 TD-SCDMA CMMB
 DL/UL: 2.8Mbps/384Kbps
Sample time: pending

TD-SCDMA
Module



SIM4100D
 SMT
 TD-SCDMA
 Dual-Band 2G
 DL/ UL: 384kbps/128kbps
 Size: 55*33*3.5mm



SIM4100V
 100 Pins B2B
 TD-SCDMA
 Dual-Band 2G
 Video Call
 DL/UL: 384bps/128Kbps

Thank You



www.sim.com/wm